



## Lamas, Your BFF!

2018

WELCOME!

We are so pleased to welcome you to GALA's 31st Annual Educational Conference and are thrilled to have another excellent program. This year's program will feature some of the camelid community's most notable and experienced veterinarians, trainers, fiber lovers and speakers who will share their knowledge and, hopefully, expand yours! As happy as we will be to see all of you who have attended numerous conferences, we are especially looking forward to seeing first time attendees (who are able to take advantage of the half-price conference package) and we hope they will choose to return to, and participate in, future conferences. GALA welcomes new members (don't forget you will get half off your conference package) and ideas are the lifeblood of our organization. We look forward to meeting you and hearing your comments.

Take a few minutes and peruse the schedule to become familiar with all that is being offered and arrange your time to best advantage; whether you're interested in veterinary sessions to aid you in taking the very best care of your camelids, training your llamas with the basics or getting them to willingly go under, over or through any obstacle course, sharing and helping others with your llamas through pet-assisted therapy, enjoying the great outdoors with day trips or week long mountain treks, it's all here! And don't forget all the fun extras: an ILR-sanctioned Fiber Show, the "GALA's Got Talent" evening, the fabulous vendors (the Holidays ARE coming) and Sunday morning's Yard Sale. So much to do and learn – take advantage of it all! Also, if you have fiber that needs processing, be sure to bring it to send with Lydia, owner of Gurdy Run Mill. She will be accepting it ONLY on Friday.

When you order all the fabulous T-shirts and hoodies, please note that orders for these MUST be received by Oct.5th in order for them to be ready for you to pick up at the Conference.

We encourage those of you who know your way around our conferences to make a point of introducing yourselves to the new faces, "showing them the ropes", making them feel at home and that they leave having made new friends and for the "first-timers", don't hesitate to ask any of the "many timers" for directions or help of any kind. GALA members are simply the best!

We look forward to seeing you in October!

**Save Time and Postage.**

**Log on to [www.galaonline.org](http://www.galaonline.org) and register using one of our on-line registration forms.**

## Lodging

The 2018 Annual Conference of the Greater Appalachian Llama & Alpaca Association, **Lamas - Your BFF**, will be held at DoubleTree Resort by Hilton Hotel in Lancaster, Pennsylvania. **The hotel has reserved a block of rooms on a first come, first served basis until 09/24/18. Be sure to say that you are with GALA when you make your reservations.** You may make a request for a smoking or non-smoking room. We have one great price of \$119 plus tax per night for single or double rooms if booked by 09/24/18. Check-in is 4 pm and check-out is by 11 am.

**To make a hotel reservation call:  
(717) 464-2711**

## Transportation

The DoubleTree Resort by Hilton Hotel Lancaster is 20 minutes from Lancaster Airport, 45 minutes from Harrisburg International Airport, and a 1.5 hour drive from Philadelphia International Airport. **To get step-by-step directions from these airports and from various locations, please go to the “Maps & Directions” page at [www.doubletree3.hilton.com](http://www.doubletree3.hilton.com)**

## Conference Registration

**Full Conference Registration is:**  
Thursday 3-7 pm and Friday 7-7:55 am

**Partial Package Conference Registration is:**  
Friday 4-7 pm and Saturday 7-7:55 am

You will receive a name tag at registration, (which reflects the name and farm name as they appear on your registration form).

**PLEASE REMEMBER THAT YOUR NAME TAG WILL INSURE YOUR ADMITTANCE TO ALL SESSIONS AND MEALS. WEAR IT TO ALL OF THE CONFERENCE FUNCTIONS.**

**A limited number of individual meal tickets will be available for Conference attendees who are expecting a guest for Saturday night's banquet.** Inquire at the registration table when you check in for the Conference. **Hotel registration** must be done at the main desk of the DoubleTree Resort which is on the upper level as you enter through the main entrance.

## Fiber Room

The Fiber Room will be on the level three terrace. All fiber classes will be held there.

## GALA Membership Dues

If you have overlooked paying your annual membership dues or are new to GALA, please include your dues payment with your Conference Registration form. GALA dues are \$40 yearly. The year runs from January 1st – December 31<sup>st</sup>. **Check the space under Join or Renew GALA membership on the registration form.** If you do not wish to join GALA, non-membership conference registrations are available, but will cost \$45 more per person than member conference registrations.

## T-shirts & Hoodies for Sale

GALA is selling comfortable t-shirts and hoodies in various colors that you can find in the August newsletter or on the website. GALA's t-shirts are available in sizes S-XL for only \$16 and 2XL/3XL for \$18. The hoodies are available for \$26 and sizes 2XL/3XL for \$29. **You must order them in advance using the form included in this packet. This is separate from the registration form.**

## Farm/Product Displays

Farm/Product displays are an excellent way to advertise. Each 18" x 8' space is \$60. A table is provided, but you must bring your own extension cord if you want electricity. **Be sure to circle “electric” under Exhibits - Farm/Product Displays on the registration form,** since not all spaces have access to electricity. There are a limited number of farm/product display spaces so they will be on a first come, first serve basis. **Set up begins 1:00 pm on Thursday.**

## Farm Banners

Farm banners are welcome and will be hung by the hotel on a first come, first serve basis, where space allows. Be sure to drop off your banners at the Conference Registration table when you arrive and include identifying information on the back of your farm banner.

## Vendor Space

Vendors will be located in the Statesmen Hall. Each vendor space is \$100 and is approximately 100 sq. ft. Not all spaces will have a solid back wall so plan accordingly. Each vendor space will be provided with one table and two chairs. Electricity will be available upon request (first come, first serve.) You are encouraged to bring your own extension cords but there will be some available from the hotel for \$10 per cord. Vendors will receive a conference schedule upon registration. Vendor space is limited so please sign up early. **For more information, see the latest newsletter or contact Tabbethia Haubold-Magee (631) 680-6721.**

**Vendor set up is Thursday at 1 - 10 pm. Break down may begin after brunch on Sunday, unless special circumstances apply.**

## Separate Meal Package for Vendors

This year, we are continuing to offer a separate complete conference meal package for vendors. The cost is \$180 per person and includes the following: Thursday icebreaker, Friday lunch & dinner, Saturday lunch & dinner, Sunday brunch, all scheduled breaks, & events scheduled during meals. Breakfast each day is on your own. **Check the box for the Full Meal Only Package space under EXHIBITORS on the registration form.**

**A limited number of individual meal tickets will be available for vendors not purchasing the Full Meal only Package.** Inquire at the registration table when you are checking in for the Conference.

## What to Bring...

Please bring suitable attire for the outdoor sessions, remembering that the Conference is late October. Any classes with hands-on animal demonstrations will be held outdoors, rain or shine. The hotel has an indoor pool and fitness center, so bring your swimsuit and fitness clothes if that's your thing!

**Please do not bring your animals unless it was pre-arranged to bring them for demonstration purposes. There will be no private treaty sales.**

## Fundraising Donations

GALA prides itself on donating funds to camelid medical research and government relations as a result of our fundraising, which takes place at the Conference. A very small percent of the funds raised is retained for GALA's operating budget. Please consider giving in one of the following ways:

- Donate your items for our Live, Silent, and Raffle Fundraisers
- Donate money directly to GALA
- Set aside money to spend at the Conference in the various fundraisers, including the 50/50 Raffle and those listed above
- Why not consider teaming up with a few friends to donate a larger item to the live auction. GALA will accept all sorts of items like art work, crafting equipment, farm equipment, and medical supplies; just to name a few.

**To help us keep track of donations being made, please complete the Conference Fundraising section on the registration form.**

If you are unable to attend the conference but still want to donate an item for the fundraiser, have your item sent to:

GALA Conference  
c/o Carol Reigh  
409 Buck Hollow Rd, Birdsboro, PA 19508

## You Can Help...

Offer your time and help. We need volunteers to help set-up on Thursday and help break-down on Sunday. Contact Janice Newcomer if you are willing to help. [janicethegardener@gmail.com](mailto:janicethegardener@gmail.com).

## Ice Breaker

The Ice Breaker on Thursday evening serves as an informal and fun way to meet and greet people at the conference. For newcomers to the conference, it is a great way to meet others and break out of your shell. For "oldcomers", it serves as a way to welcome people into the GALA community and to make new friends.

## Conference Notebook Advertising

The GALA Conference Notebook is a valuable resource and, therefore, a good advertising investment for your farm or business. Even if you cannot attend the conference, it is a great way to get your name out there. It will benefit both you and GALA. Please consider placing an ad. If you have never advertised before, Steven Fisher will happily walk you through it with ease. He'll even design a simple ad for you, for a small fee, based on the size of your ad. The easiest way to proceed is to send your ad to Steve Fisher and to pay the notebook advertising fee using the on-line registration form (link on website). **For more information, please contact Steven Fisher at [sfdesigner17@gmail.com](mailto:sfdesigner17@gmail.com).**

## Make an Ornament

We invite everyone to make an ornament, using Camelid fiber, to be hung on several small Holiday trees. They will be on display around the conference and then each decorated tree will be auctioned on Saturday night. Yet another way to help GALA's fundraising efforts!

## 3rd Annual Yard Sale

### What is this?

Primarily farm and fiber equipment GALA members are ready to pass on at yard sale prices. This is a great opportunity to pick up a necessity at a bargain price! **No clothing, jewelry or books.** We don't want to compete with vendors or fundraising activities. If in doubt, please call Carol Reigh at (610) 582 9051.

### How will it work?

To participate, GALA member signs up for Yard Sale at **registration**, listing items to be sold. Requires a \$10 donation to GALA to sign up. \$10 allows the member to bring up to 3 items or 3 "lots" (a "lot" being a group of items to be sold together.) You have a sign up sheet here and an envelope for the \$10. If it's a check, payable to GALA. The Yard Sale will have two methods. Participant may choose which she/he would prefer. One option is standard yard sale – item(s) are on the table, seller stands there and accepts or rejects offers. Offers may be cash or swap. Second option is a mini auction, during which seller has 2 or 3 minutes (depending on number of folks participating) to present item and bids. **In all cases, the seller may accept or reject offers. If the seller does not accept any offers, seller must take items back home.**

### When will this take place?

Sunday morning at 11:10 to 11:30. (Bring items in for set up between 8:00 and 8:30) **ROOM TBA** We are planning to keep the items secret (although we may hint at some over the course of the Conference to increase interest.) Sellers need to keep their items in their rooms or vehicles until Sunday morning (or possibly an earlier time will be announced.) Tabbethia will be in accepting items at 8:00 am on Sunday.

**All sales are between the sellers and buyers. GALA is only providing the sales opportunity. So buyers need to have cash or checks and determine if the item is in the condition they want. This is a yard sale. There is no recourse for an unhappy buyer. Items not sold/swapped must be taken home by the person who brought them.**

## Photo Contest

Don't forget to enter the Photo Contest!

- Photographer must be a GALA member and an amateur
- Each photographer may submit 2 entries per category
- Each entry must contain a camelid or some identifiable portion of a camelid
- \$7 per photo, check payable to GALA Conference 2018
- Categories: Black & White, Comedy, Crias, Full Body, General, Interacting with People, and Portrait

For more information about size, matting, entry fees, and display; see the most recent issue of the GALA newsletter or [www.galaonline.org](http://www.galaonline.org)

Send an envelope/package marked:  
"Handle with Care" to:

GALA Photo Contest  
c/o Bob Wolfe  
Spruce Lane Llamas  
31 Wagner Rd, Stockton, NJ 08559

**Entries due by 10/09/2018.**

## 2019 Photo Calendar

Be sure to purchase a GALA photo calendar put together by GALA members. They make great gifts for friends, family, and farm helpers. \$15 each and there is no limit.

## 2nd Annual Fleece Show

GALA invites you to participate in their second annual Fleece Show during the Conference. Take this opportunity to exhibit your best shorn fleeces which will be evaluated by a nationally recognized fiber judge. All fleeces will be displayed after the show, and results will be announced during the conference. In addition to having your fleece judged, each exhibitor will also have the option to sell their fleece after the show. **All sales of fleeces will be handled by the exhibitor.**

Here is an excellent time to show off the very marketable fleeces you harvest each year. Prizes will be awarded to Grand & Reserve Champions in each division, as well as Best In Show.

**Please see the GALA website or the enclosed entry form for more details or contact the show's superintendent, Josh Meador, at (540) 488 5309.**



## GALA's Got Talent!

That's right; GALA is hosting our very own Talent Show at this year's conference. It will be on Friday night. We know there are all kinds of hidden and unseen abilities in our members! We'll have a panel of judges, a stage, prizes and a captive audience; all that is needed for you to be able to share and show off. So dust off those tap shoes, tune up the instruments, unpack the leotard or whatever is needed and plan for an evening of mirth, merriment and most assuredly, some surprises! Sign up at the registration table.



# Conference Schedule

\*You may also register and pay online at [www.galaonline.org](http://www.galaonline.org)

## Thursday Schedule

- 1:00**                    **Animal and Vendor Setup Begins**
- 3:00 - 7:00**            **Full Conference Registration**
- 5:00 - 7:00**            **Dinner on your own (BOD meeting at 5:30)**
- 7:00**                    **Fleece Registration**
- 8:00**                    **Icebreaker (meet old and new friends)**
- 9:00**                    **Meeting for the Andean Trip April 2019 (TBA)**

**Shearing**  
Tabbethia Haubold-Magee  
Learn the basics of shearing, where to start, and how to stay safe.

**3D Needle Felting (make & take)**  
Pat McKinney

**Beginning Spinning**  
Debra Gaskill

**12:15 - 1:30**            **Lunch**

**1:30 - 2:45**            **Session 3**  
**Medical 101 - Knowing the Medical Side of Your Lama**  
Dr. Patrick Long

**Doing Therapy with Your Lamas**  
Niki Kuklenski

**Level 2 Desensitizing and Halter Training**  
John Mallon

**Creative Blending with Your Lama Fiber**  
Lydia Piper  
Learn and see what happens when you blend different materials with your camelid fiber.

**3:00 - 4:15**            **Session 4**  
**Parasite Overview**  
Dr. Pamela Walker  
Get the inside scoop on parasites.

**Raising Bees on Your Farm**  
Anita Collins

**Packing 101 - Pack Fit, Day Packing, Weekend Trips**  
Margaret Van Camp & Cindy Cieciewa

**Beginning Crochet**  
Kelly Ralph

## Friday Schedule

- 7:00 - 7:55**            **Full Conference Registration**
- 8:00 - 9:15**            **Keynote**  
**Morris Animal Foundation Update**  
Dr. Patrick Long
- 9:30 - 10:45**        **Session 1**  
**Level 1 - Understanding Your Lama**  
John Mallon
- Hands On - Toes, Shots and Oral Dosing**  
Carol Reigh
- Wet Felting Using a Resist (make & take)**  
Karen Taylor
- All about the Ccara Llama--Definition and Uses**  
Margaret Van Camp
- 10:45**                    **Break & Shopping**
- 11:00 - 12:15**        **Session 2**  
**Heat Stress - What is it? Prevention, Identification and Treatment**  
Dr. Pamela Walker
- Determining Hay Quality, Pasture Weeds and Fertility Management**  
Jeffrey Scott Graybill and Leon J. Ressler

**4:15**                    **Break & Shopping**

**5:00 - 5:30**            **Fiber Show Results & Cocktails**

**5:30 - 6:55**            **Dinner**

**7:00 - 8:00**            **Annual Meeting**

**8:00 ish**                **GALA's Got Talent**  
**A surprise panel of judges!**

# Saturday Schedule

**7:00 - 7:55**                    **Partial Package  
Registration**

**8:00 - 9:15**                    **Keynote**

## **Multiple Species Fiber Farming**

Margaret Van Camp  
Margaret Van Camp (Pitchfork Ranch, Swartz Creek, Michigan) will be sharing her experiences gleaned over 18 years of working and living on a farm dedicated to raising wool and fiber animals, and which strategies have worked (and a few that have not worked) to make the farm a self-supporting business. She will also discuss collective actions taken by large groups of various breeders that have helped to improve the marketability of the respective breeds, both in terms of animals and their fiber.

**9:30 - 10:45**                    **Session 1**

## **Geriatric Camelids**

Dr. Patrick Long  
Understand their needs and how to treat them.

## **Level 1 - Understanding Your Lama (repeat)**

John Mallon

## **When to Call the Vet--Getting Ready for the Vet. Hands on Body Condition Scoring & FAMACHA**

Dr. Pamela Walker

## **Working with Blending Boards to Create Rolags**

Kathy Kenworthy

**10:45**                            **Break & Shopping**

**11:00 - 12:15**                    **Session 2**

## **Medicine Cabinet**

Dr. Pamela Walker

## **Before Hitting the Trail**

Margaret Van Camp  
How to prepare and train llamas for their first few outings.

## **Obstacle Training Points**

Niki Kuklenski  
Learn how you lose points during the course and glean tips on how to train your lama to do obstacles.

## **Weaving On a Tree Limb (make & take)**

Barb Baker  
Even if you've never woven anything before, this is the session where you can learn a few basics without needing a loom. Your loom will be "Y"-shaped branches or twigs from your backyard or garden and your yarn will be any or all of those short bits in your stash that you can't bring

yourself to throw away. You can also weave in dried weeds, small shells and flowers collected from your garden; bring these with you. "Looms" will be available or you may bring any nicely-dried, but not brittle, branches (at least a half inch in diameter, but not more than an inch and a half). If you have a weaving needle, bring that, but there will be a few available for loan. You'll learn how to quickly warp your "loom" and a few basic weave patterns and leave with a wall-worthy, one-of-a-kind piece of art!

**12:15 - 1:30**                    **Lunch**

**1:30 - 2:45**                    **Session 3**  
**Sometimes it is a Zebra When You Hear Hoofbeats-- A Collection of Unusual Cases**

Dr. Patrick Long

## **How to Market Your Farm**

Bev Vienckowski

## **Level 2 - Desensitizing and Halter Training (repeat)**

John Mallon

## **Needle Painting with Fiber**

Anita Collins  
Learn how to needle felt a picture.

**3:00 - 4:15**                    **Session 4**  
**Meningeal Worm and Barber Pole--Symptoms, Diagnosis and Treatment**

Dr. Pamela Walker

## **Insurance--When & Why do I need it? Am I Covered?**

Chuck Leach

## **Packing 201 - Out on the Trail**

Margaret Van Camp & Cindy Ciecwiwa

## **Locker Hooking (make & take)**

Laura Didonato

**4:15**                            **Break & Shopping**

**4:30 - 5:45**                    **Session 5**  
**Breeding, Birthing, Neonatal Care**

Dr. Patrick Long

## **Barns, Fences, Paddock Design**

John Mallon

## **How to Plan a Conference (Fireside Chat)**

Past Chairs

**4:30 - 5:45**      **Session 5 (continued)**

**Knit a Hat (make & take)**

Teri Conroy

Bring your own yarn and needles.

**6:30**              **Cocktails and Shopping**

**7:30**              **Dinner and Fundraisers**

## **Sunday Schedule**

**8:00 - 8:30**      **Yard Sale Registration (TBA)**

**8:30 - 9:45**      **Session 1**

**Photographing Your Lama**

Bob Wolfe

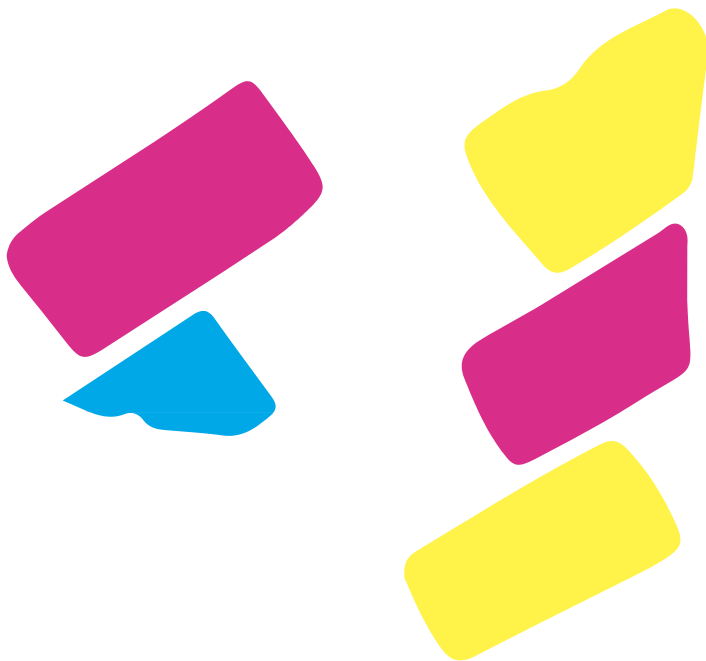
**Guard Llamas in Demand**

Hilary Ware

**10:00 - 11:00**    **Panel Discussion--  
Making Money with  
Your Lamas**

**11:10 - 11:30**    **Yard Sale (TBA)**

**11:30**            **Brunch & Farewells**



# Speaker Bios

## Margaret Van Camp

Margaret has been co-owner of Pitchfork Ranch in Swartz Creek, MI, medium-sized sheep and llama operation, since 1996. With partner Cindy Ciecwiwa, they maintain a flock of 40 purebred ewes and 10 llamas. The sheep flock is composed of Romneys, Bluefaced Leicesters, and Teeswaters, all longwool breed. In llamas, Classics are the farm favorite. Chickens, bees, and few barn cats round out the farm, all protected by two very dedicated Great Pyrenees guard dogs. Margaret recently retired from teaching high school Spanish for 34 years. Margaret is currently the president of the Bluefaced Leicester Union and is a past board member of the American Romney Breeders association, which are the registries for their respective breeds. She has presented workshops and demonstration dealing with such diverse topics as llama training, shearing, marketing fiber and purebred sheep breeds, all geared toward the small producer. She has served as a 4H and open show sheep judge, as well as a course judge on llama pack trials. Margaret has participated in and organized llama pack trials in Michigan and Pennsylvania. She and Cindy have hosted multiple events at their farm, including llama training days, shearing and fiber use demos, and the annual Michigan Sheep Breeders Association Small Flock Picnic. They have been successfully marketing their wool and wool products for over 15 years. Margaret and Cindy enjoy showing their sheep at several large events, including the Maryland Sheep and Wool Festival, the New York Sheep and Wool Festival and the Michigan Fiber Festival. Currently, Margaret and Cindy limit themselves to three or four sheep shows per year.

## Pamela Walker

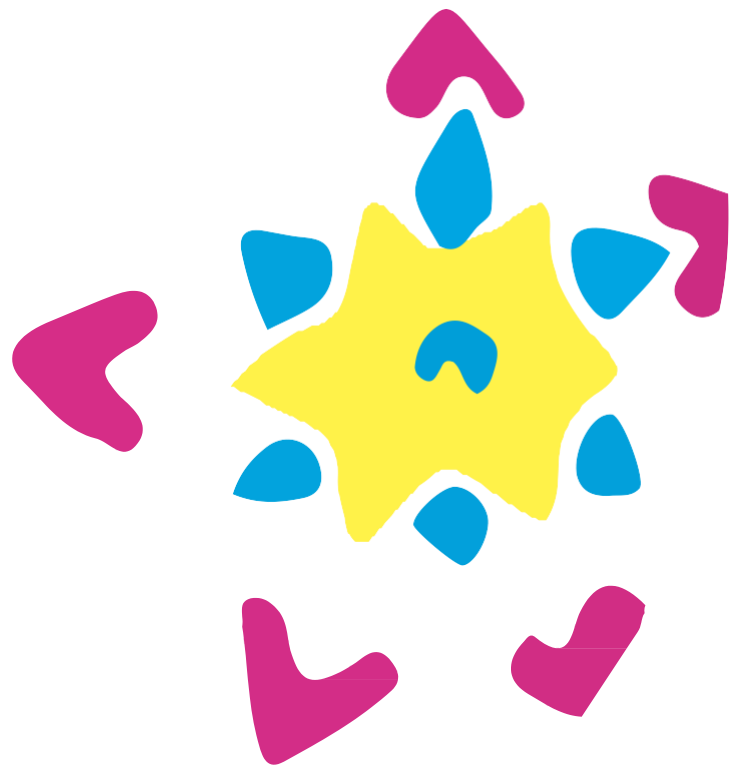
Dr. Pamela Walker is a 1992 graduate of Kansas State University College of Veterinary Medicine. After two years in private practice as a Dairy practitioner, she went to the University of Illinois to complete a Food Animal Medicine and Surgery degree. During this time, she finished her boards in the American College of Veterinary Internal Medicine, specializing in Large Animals. She has taught senior veterinary students at University of Illinois, Washington State University, Michigan State University, and the Ohio State University. She loves to teach and has been invited to speak to owner/breeders and veterinarians about camelids in the US and internationally and is on the board of directors for the International Camelid Institute. She worked for ten years as a full time veterinarian for a large Ohio Alpaca farm (Alpaca Jack's Suri Farm) where she was responsible for the medical, surgical, reproductive and daily health care for the alpacas. She has expanded her practice to include medical and reproductive care for camelids across the country. Currently, she has her own private practice (Camelid Care Veterinary Services) and is based out of Grove City, Ohio. She can be contacted at 419-306-9522 or for non-emergencies at [pamwalker@hotmail.com](mailto:pamwalker@hotmail.com)

## John Mallon

With over 40 years experience in the training of horses, dogs, and birds, John Mallon has devoted himself exclusively to all aspects of the llama and alpaca industry since 1981. A popular featured speaker at regional, national, and international venues, and a longtime consultant with an international list of clients, John has averaged 50 to 60 clinics a year since 1994. The enthusiastic response to the Mallon Method has made it hard for him to cut down on "road time" in order to spend more time with his llamas, dogs, cats, and cutting horses on his 28 acre ranch in the beautiful back country of San Diego County, California. Recently, John has moved his ranch to the beautiful mountains of Greenville, Tennessee.

## Patrick Long

Dr. Patrick Long has been working with llamas and alpacas for over 30 years. He has co-authored several books and authored numerous articles on llama and alpaca care. Dr. Long graduated from Kansas State University and spent several years in the United States Army as a veterinarian. A recipient of the American Association of Small Ruminant Practitioners award in 2008, he has worked with llamas and alpacas since 1982. Dr. Long has lectured extensively at producer groups, state veterinary meetings and international veterinary meetings on llamas and alpacas.





# GALA Shorn Fleece Show and Sale

October 25-28, 2018

In conjunction with the GALA Conference

Judge: Niki Kuklenski

Show Superintendent: Josh Meador

Additional division of classes: At the judges discretion, classes may be further divided in the following prioritized order: age at shearing, color, gender. When dividing a class, the number of entries in each new class must equal or exceed 3 fleeces. Fleeces may be moved to a more suitable fiber class at the Judge's discretion.

Class 01	Single w/ crimp	5-23 mos	Class 01 A	Single w/ crimp	24 mos and up
Class 02	Single w/o crimp	5-23 mos.	Class 02 A	Single w/o crimp	24 mos and up
Class 03	Double Coat	5-23 mos.	Class 03 A	Double Coat	24 mos and up
Class 04	Suri	5-23 mos	Class 04 A	Suri	24 mos and up

Name \_\_\_\_\_  
 Address \_\_\_\_\_  
 Phone \_\_\_\_\_ Email \_\_\_\_\_

Please enter our show by mailing your entry form and check (made payable to GALA Fleece Show) to \_\_\_\_\_  
 Entry fees are \$23/ fleece. If you mail your fleece, please include \$5/ fleece and a return label. Each fleece should be in a clear plastic bag with a picture of the animal, the ILR, and a fleece entry tag ( go to the [www.galaonline.org](http://www.galaonline.org)).  
 \_\_\_\_\_ Yes, I want to offer my fleece for sale. Asking price? \_\_\_\_\_  
 \_\_\_\_\_ No, I do not want to sell my fleece.

Class	Name of Llama	DOB	ILR #	Gender	How many months growth

**Entry Form Post Marked** by October 20, 2018

Number of shorn fleeces \_\_\_\_\_ x \$23 = \_\_\_\_\_

Return mailing at \$5/ fleece \_\_\_\_\_ x \$5 = \_\_\_\_\_

**Total** \_\_\_\_\_

**Make Checks payable to GALA Fleece Show**


*Entrants must read and sign: It is understood and agreed that GALA , its volunteers, BOD or other persons shall not be held responsible for any loss, damage, injury to any person property or animals which is caused directly or indirectly by any reason. The undersigned also agrees to Hold Harmless GALA for any expenses or liabilities, including attorney's fees.*

Exhibitor: \_\_\_\_\_  
 Date: \_\_\_\_\_

The Fleece Show will be governed by the ILR-SD Guidelines. All Llama fleece entries must be turned into to Josh Meador by 6 p.m. on Thursday, October 25, 2018 or mailed and **received by Oct. 20, 2018** to Carol Reigh, 409 Buck Hollow Rd. Birdsboro, PA 19508. If you cannot be there to pick up your fleece or have someone pick up for you, please send an additional \$5 per fleece for return mailing and an address label.

**"LAMAS - YOUR BFF! ORDER FORM: T-SHIRTS AND HOODIES:** See Photos & Colors on GALA website

Name: \_\_\_\_\_  
 Address \_\_\_\_\_  
 Phone and email: \_\_\_\_\_



Lamas...Your BFF!

**10% Discount for purchase of 10+ items!!**

T-shirts and Hoodies can bring added sales to your farm store, be great "thank you" gifts for clients, your vet, farm help.

**T-shirt Order: \$16 each (sizes S-XL) \$18 each (sizes XXL-XXXL)**

Sapphire Blue: \_\_\_S \_\_\_M \_\_\_L \_\_\_XL \_\_\_XXL \_\_\_XXXL  
 Heliconia Pink: \_\_\_S \_\_\_M \_\_\_L \_\_\_XL \_\_\_XXL \_\_\_XXXL  
 Galapagos Blue: \_\_\_S \_\_\_M \_\_\_L \_\_\_XL \_\_\_XXL \_\_\_XXXL  
 Sport Grey: \_\_\_S \_\_\_M \_\_\_L \_\_\_XL \_\_\_XXL \_\_\_XXXL  
 White: \_\_\_S \_\_\_M \_\_\_L \_\_\_XL \_\_\_XXL \_\_\_XXXL

Total for T-shirts: \_\_\_\_\_ @ \$16 each = Cost: \_\_\_\_\_  
 Total for XXL/XXXL: \_\_\_\_\_ @ \$18 each = Cost: \_\_\_\_\_

**Hoodie Order: \$26 each (sizes S-XL) \$29 each (sizes XXL-XXXL)**

Charcoal: \_\_\_S \_\_\_M \_\_\_L \_\_\_XL \_\_\_XXL \_\_\_XXXL  
 Heliconia Pink: \_\_\_S \_\_\_M \_\_\_L \_\_\_XL \_\_\_XXL \_\_\_XXXL

Total for Hoodies: \_\_\_\_\_ @ \$26 each = Cost: \_\_\_\_\_  
 Total for Hoodies: \_\_\_\_\_ @ \$29 each = Cost: \_\_\_\_\_

**Total Number of Items:**  
 t-shirts + hoodies \_\_\_\_\_  
 Cost: (less than 10 items) \_\_\_\_\_  
 less eligible 10% discount for 10 or more items: \_\_\_\_\_  
 Grand Total: \_\_\_\_\_

**T-shirt/hoodie orders MUST be received by Oct. 5th**

Pick up your order at the Registration Desk when you check in for the conference OR arrange for a friend to pick up for you, if you are unable to attend.

T-Shirts can be ordered using the on-line registration form.

